

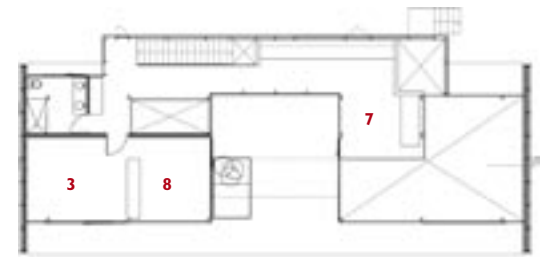


1

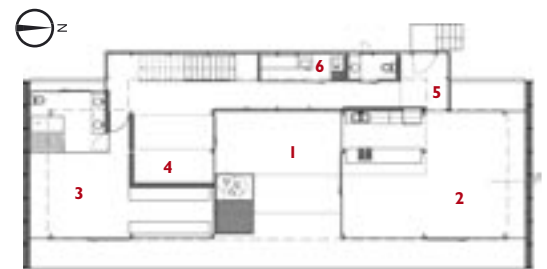


2

1
Within a standard framework, double-height accommodation is oriented towards the best views of the Andes.
2
A service run dominates the rear elevation, providing privacy from neighbouring properties.



first floor plan



ground floor plan

X marks the spot

With no site, Architectura X create a generic framework.

This Donald Judd-inspired house, in Quito was conceived before the architects knew its location. The final resting place could have been anywhere between the eastern and western ranges of the Andes, and so the architects began by designing a generic solution by reviewing their understanding of established house types: the glass house and the patio house. What they then developed was a hybrid of both, with three principal transparent zones within a solid

open-sided box, and when the site was finally known the material composition and size of apertures were arranged accordingly to control key views.

Part patio and part glass house, the rusty steel and plywood box sits on a concrete plinth. Into this were placed lightweight steel and glass accommodation units, linked and served by a polycarbonate service block that offers privacy from neighbouring properties. The accommodation includes a

bedroom and family and living rooms on either side of the ground floor patio, and a study and twin bedroom suite at first floor. A horizontal aperture above the patio provides framed views of the sky, while the soffit of the timber-lined box frames more distant views towards the stunning eastern range. R. G.

Architect
Arquitectura X, Quito
Photographs
Sebastian Crespo

- 1 patio
- 2 living/kitchen/dining
- 3 bedroom
- 4 family room
- 5 entrance
- 6 service/storage
- 7 study
- 8 playroom

**HOUSE, QUITO,
ECUADOR**
ARCHITECT
ARQUITECTURA X