

**HOUSE, INNICHEN,
SAN CANDIDO, ITALY**
ARCHITECT
PLASMA STUDIO

Parasites are usually unwelcome. This one, however, has its own quirky charm that makes this domestic relationship seem more symbiotic than the architect's description initially suggests. Conceived as a stratified geological formation (an Esker), a series of steel and timber frames deform to create a silhouette intended to echo the neighbouring Dolomite mountains. More practically the result is an accessible roofscape that provides essential internal and external spaces to extend an existing two-storey family dwelling. Providing a self-contained penthouse, the rhythm of the external stair establishes the module of the stratified form that buckles to create a crevasse-like stepped terrace from which exceptional views can be enjoyed. Internally the unit is arranged over two half levels, with an orthogonal range of accommodation that has two bedrooms, a bathroom and a kitchen at the upper level, while at the lower level a living room and sun terrace make the most of the roof's curious form. R. G.

Architect
Plasma Studio, London
Photographs
Cristobal Palma



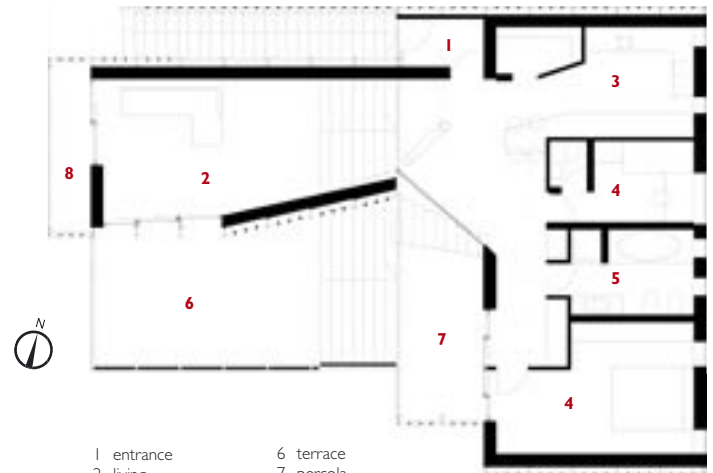
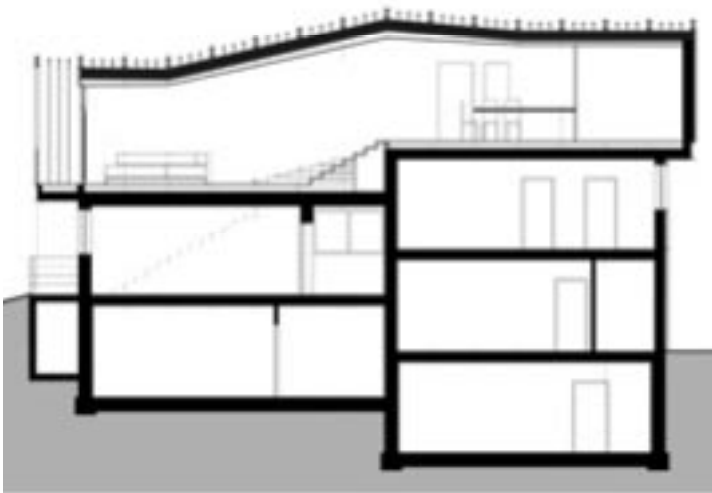
Step change

Plasma Studio's mountainous roof addition in Innichen.

1 A rather unremarkable house has been transformed by this new addition.
2 Significant care and consideration was given to external spaces.



2



- 1 entrance
- 2 living
- 3 kitchen
- 4 bedroom
- 5 bathroom
- 6 terrace
- 7 percola
- 8 balcony

apartment level plan